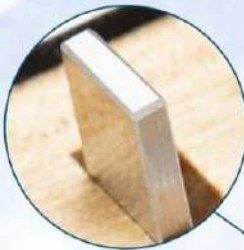


CALIBRATION GAUGE BLOCK SET

DIN ISO 3650

MADE OF HIGH-QUALITY STEEL

- High-carbon, high-chrome steel provides high hardness ($\geq 63\text{HRC}$) and wear resistance.
- Strictly made in accordance with DIN ISO 3650.
- made of high-quality alloy steel.
- Edges are slightly lapped for protection.

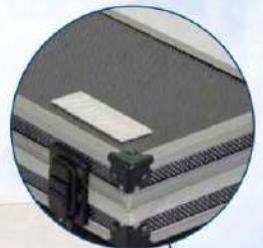


- Precision ground, mirror polish, heat treatment and cryogenic treatment for all measuring surfaces.



- Stable dimensions with high accuracy, low surface roughness, high wringing force.

- Provided with fitted Aluminum case



CERTIFICATE					
Dasqua					
Product name: Gage blocks		Standard: DIN ISO 3650		Set No: 6112-1232 (12PCS)	
Type: Rect		Material: Steel		Grade: 2	
Nominal Size (mm)	Run out (um)	Nominal Size (mm)	Run out (um)	Nominal Size (mm)	Run out (um)
1.005	+0.12	1.20	+0.20	4	-0.10
1.01	+0.20	1.30	+0.20	5	-0.17
1.02	+0.30	1.40	+0.20	6	-0.10
1.03	+0.10	1.50	-0.15	7	-0.10
1.04	-0.30	1.60	-0.20	8	+0.20
1.05	-0.03	1.70	-0.12	9	-0.17
1.06	-0.20	1.80	+0.30	10	+0.30
1.07	-0.05	1.90	+0.04	20	+0.08
1.08	-0.10	1	-0.20	30	+0.20
1.20	+0.25	2	+0.20	50	-0.10
1.10	+0.25	3	-0.30		

Remarks: Standard reference temperature: 68°F (20°C)
Coefficient of thermal expansion: $(11.5 \pm 1.6) \times 10^{-6}/^{\circ}\text{C}$

Reported by: David

