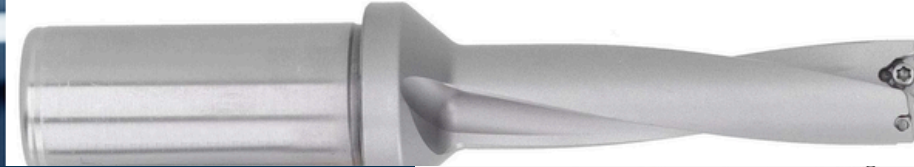




U Drill Shank

The holes made by drilling have good surface finish and small tolerance range, which can be used instead of some rough clock knives.



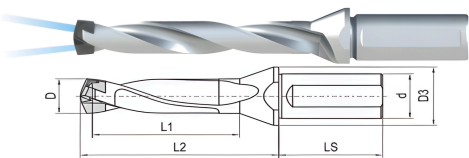
EDGETEC[®]

WE TURN YOUR IDEAS INTO REALITY

Edgetec Drilling Tool Holder

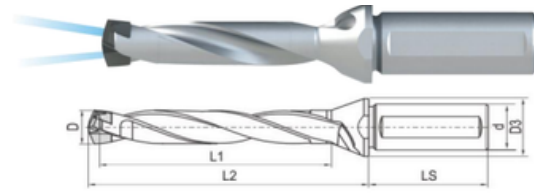
Made of high quality alloy steel
 Round shank with flat according to ISO9766
 With coolant hole design for high speed and smooth cutting.
 Quality polished flute for chip moving quickly.
 Supplied with assembly key and without carbide cutting head.

Drilling Depth : Dx3



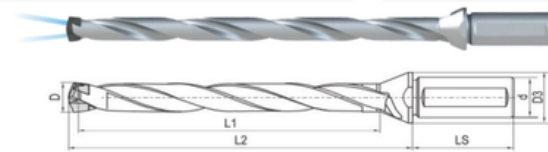
Order No.	For Cutting Dia.(mm)	Size(mm)						Key
		d	D3	L1	L2	LS	D	
103D-025	12.0-12.9	16	20	37	54.5	48	12	#2
103D-030	13.0-13.9	16	20	41	58.1	48	13	#2
103D-035	14.0-14.9	16	20	44	63.6	48	14	#2
103D-040	15.0-15.9	20	25	45	68.7	50	15	#2
103D-045	16.0-16.9	20	25	48	73.3	50	16	#2
103D-050	17.0-17.9	20	25	51	77.9	50	17	#3
103D-055	18.0-18.9	25	32	54	82.5	56	18	#3
103D-060	19.0-19.9	25	32	57	87.5	56	19	#3
103D-065	20.0-20.9	25	32	60	91.6	56	20	#3
103D-070	21.0-21.9	25	32	63	96.2	56	21	#4
103D-075	22.0-22.9	25	32	66	100.8	56	22	#4
103D-080	23.0-23.9	32	42	69	105.4	60	23	#4
103D-085	24.0-24.9	32	42	72	109.9	60	24	#4
103D-090	25.0-26.0	32	42	75	114.5	60	25	#4

Drilling Depth : Dx5



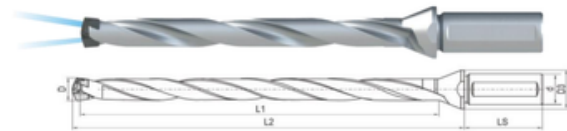
Order No.	For Cutting Dia.(mm)	Size(mm)						Key
		d	D3	L1	L2	LS	D	
105D-025	12.0-12.9	16	20	62	79.5	48	12	#2
105D-030	13.0-13.9	16	20	68	85.1	48	13	#2
105D-035	14.0-14.9	16	20	73	92.7	48	14	#2
105D-040	15.0-15.9	20	25	75	98.7	50	15	#2
105D-045	16.0-16.9	20	25	80	105.3	50	16	#2
105D-050	17.0-17.9	20	25	85	111.9	50	17	#3
105D-055	18.0-18.9	25	32	90	118.5	56	18	#3
105D-060	19.0-19.9	25	32	95	125.5	56	19	#3
105D-065	20.0-20.9	25	32	100	131.6	56	20	#3
105D-070	21.0-21.9	25	32	105	138.2	56	21	#4
105D-075	22.0-22.9	25	32	110	144.8	56	22	#4
105D-080	23.0-23.9	32	42	115	151.4	60	23	#4
105D-085	24.0-24.9	32	42	120	158.0	60	24	#4
105D-090	25.0-26.0	32	42	125	164.5	60	25	#4

Drilling Depth : Dx8



Order No.	For Cutting Dia.(mm)	Size(mm)						Key
		d	D3	L1	L2	LS	D	
108D-025	12.0-12.9	16	20	100	117	48	12	#2
108D-030	13.0-13.9	16	20	108	125.5	48	13	#2
108D-035	14.0-14.9	16	20	116	136.2	48	14	#2
108D-040	15.0-15.9	20	25	120	143.7	50	15	#2
108D-045	16.0-16.9	20	25	128	153.3	50	16	#2
108D-050	17.0-17.9	20	25	136	162.9	50	17	#3
108D-055	18.0-18.9	25	32	144	172.5	56	18	#3
108D-060	19.0-19.9	25	32	152	182	56	19	#3
108D-065	20.0-20.9	25	32	160	191.6	56	20	#3
108D-070	21.0-21.9	25	32	168	201.2	56	21	#4
108D-075	22.0-22.9	25	32	176	210.8	56	22	#4
108D-080	23.0-23.9	32	42	184	220.4	60	23	#4
108D-085	24.0-24.9	32	42	192	230	60	24	#4
108D-090	25.0-26.0	32	42	200	239.5	60	25	#4

Drilling Depth : Dx12



Order No.	For Cutting Dia.(mm)	Size(mm)						Key
		d	D3	L1	L2	LS	D	
112D-025	12.0-12.9	16	20	150	167	48	12	#2
112D-030	13.0-13.9	16	20	162	179	48	13	#2
112D-035	14.0-14.9	16	20	174	194	48	14	#2
112D-040	15.0-15.9	20	25	180	210	50	15	#2
112D-045	16.0-16.9	20	25	192	224	50	16	#2
112D-050	17.0-17.9	20	25	204	238	50	17	#3
112D-055	18.0-18.9	25	32	216	252	56	18	#3
112D-060	19.0-19.9	25	32	228	266	56	19	#3
112D-065	20.0-20.9	25	32	240	280	56	20	#3
112D-070	21.0-21.9	25	32	252	294	56	21	#4
112D-075	22.0-23.0	25	32	264	308	56	22	#4