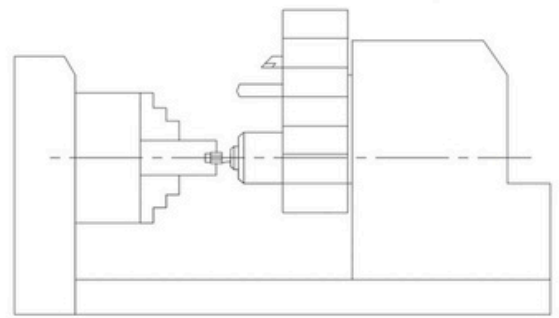
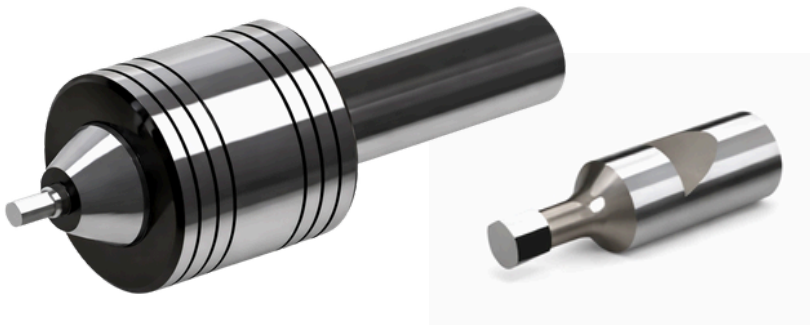
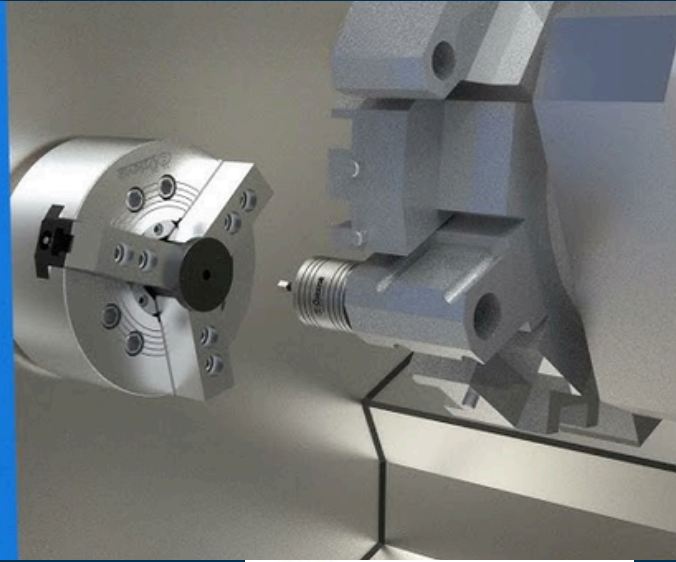
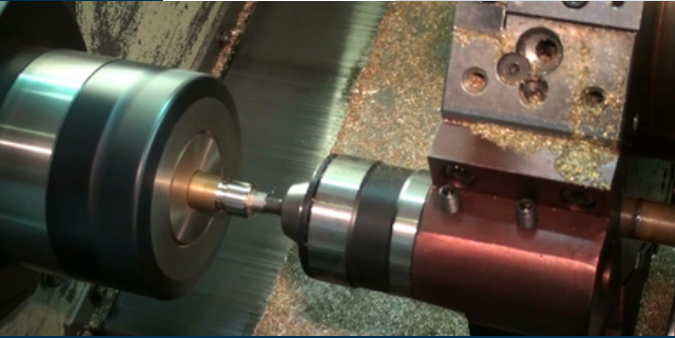


Hexagonal Opening Centre

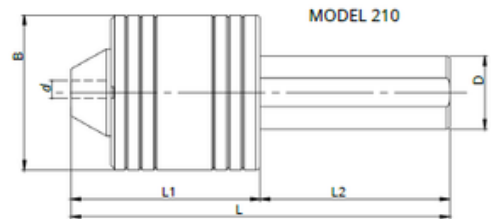


FEATURES

- Hexagonal Punch are produced to open hexagon form on CNC Lathe
- It allows you to save time by opening hexagonal form in CNC lathe quickly and cleanly.
- It allows you to perform the process done on machines such as presses more quickly. In this way, you save both machine used and time.
- The hexagon-shaped tip mounted on the tailstock tip opens Hexagon form on the workpiece.
- Hexagonal opening live center is connected to the turret part of the machine. Live center cannot be used in place.
- Hexagonal opening live center can open hexagon form 2mm to 14mm.
- The x axis of the machine where the tailstock will be used must be in the center.
- There should be no deviation in the center. Otherwise the Insert may refracting and can be refracted quickly.



Hexagonal Opening Centre



Order Code	Dimensions					Weight (kg.)
	L	L1	L2	B	D	
AD2553	130	54	65	53	25	1
AD3253	130	54	65	53	32	1,5
AD4053	130	54	65	53	40	1,5
AD2541	123	47	65	41	25	1
AD1635	125	48	75	35	16	0,5
AD2035	125	48	75	35	20	0,5
AD2535	125	48	75	35	25	0,6
AD4095	203	10	10	95	40	5,6